

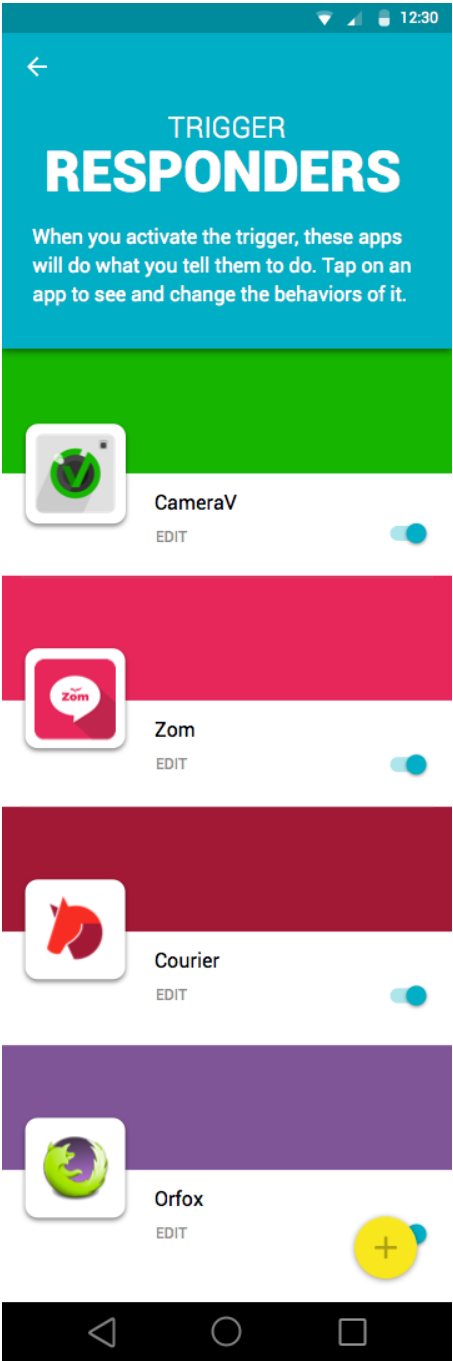
# 01 Single Trigger



HOME

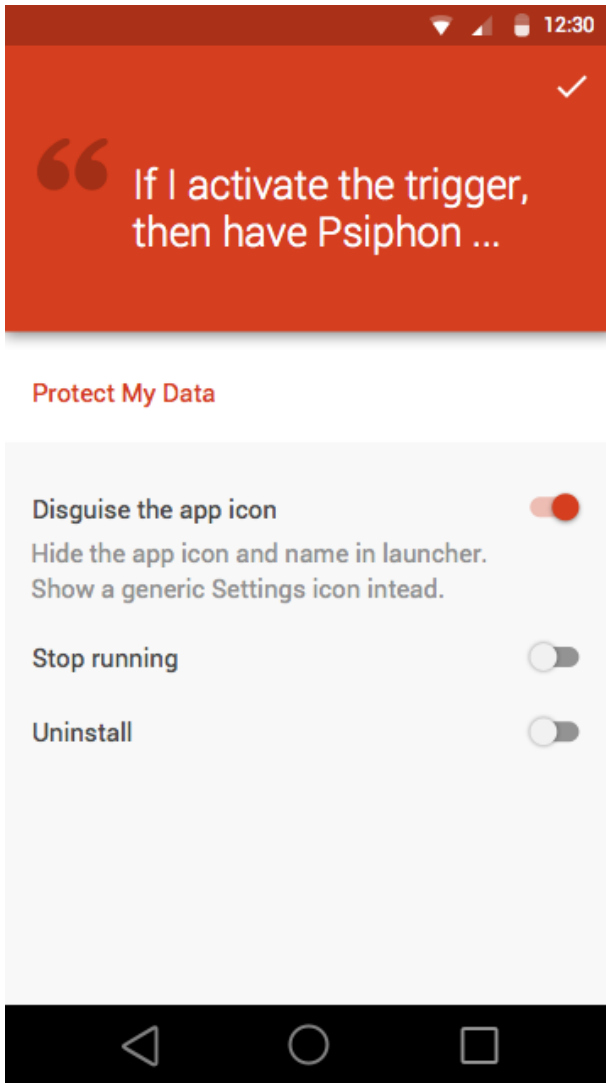


MENU

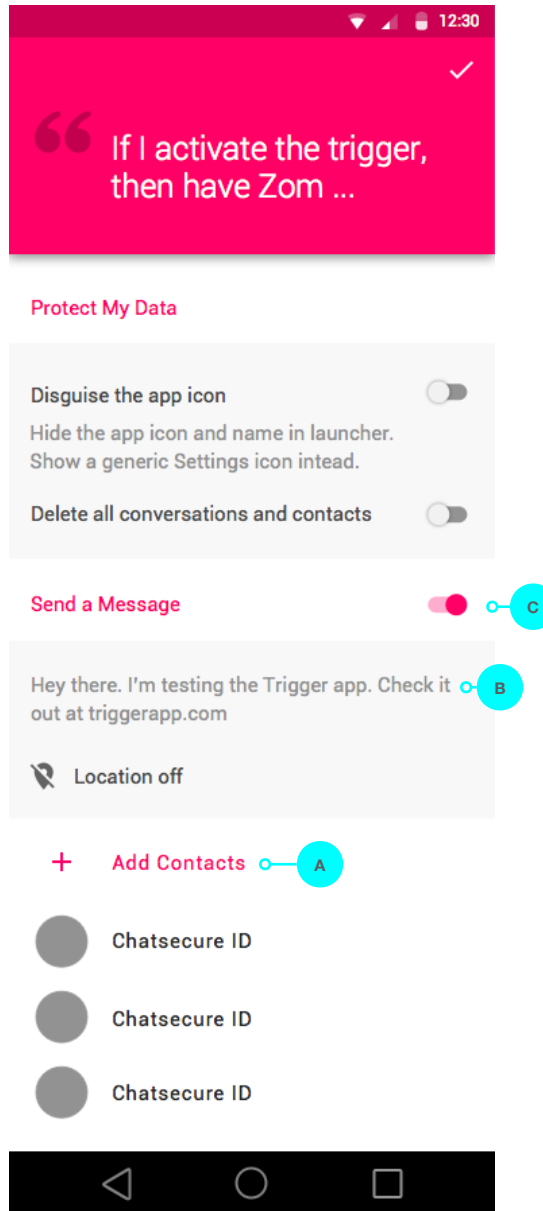


RESPONDERS VIEW

## 02 Responders



PSIPHON CONFIG



ZOM CONFIG

### Defaults

The default panic action of a responder is a non-destructive action such as locking the app or disguising the app icon. This default response is set by the creators of the responder app.

### User Actions

A. Tap to choose contacts. Go to **03 ZOM CONFIG: CHOOSE CONTACTS**

B. Tap to edit the message. Go to **03 ZOM CONFIG: EDIT MESSAGE**.

C. Toggle to enable or disable this action. If enabled the default action within this section would be selected (ex: Disguise app icon). The default action would change based on the most recently selected action by the user.

Add a note about the OR cases