

# F-Droid Nearby Design

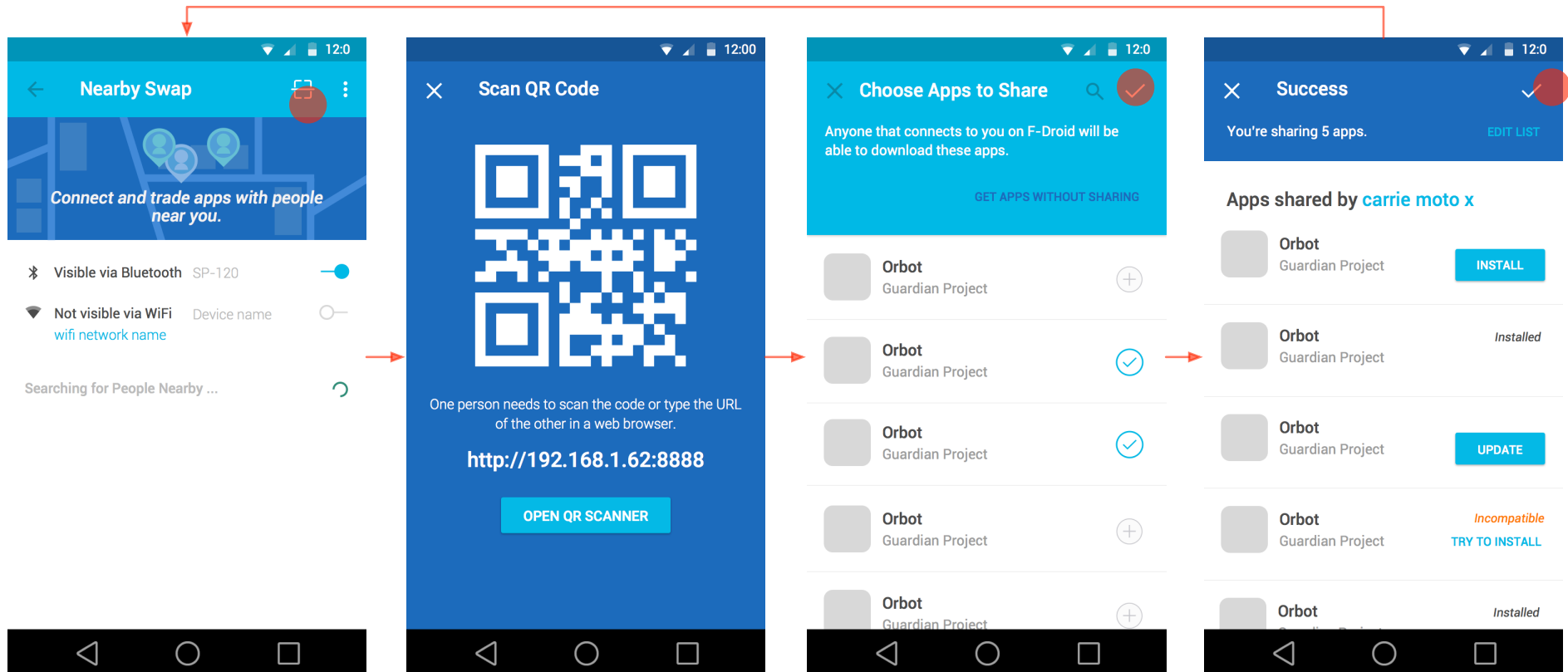
SEPTEMBER 10, 2015

Phase 2 of Design, Supported by Benetech P2P funding

## 0. Basic Workflow



## 1. Scan QR Code



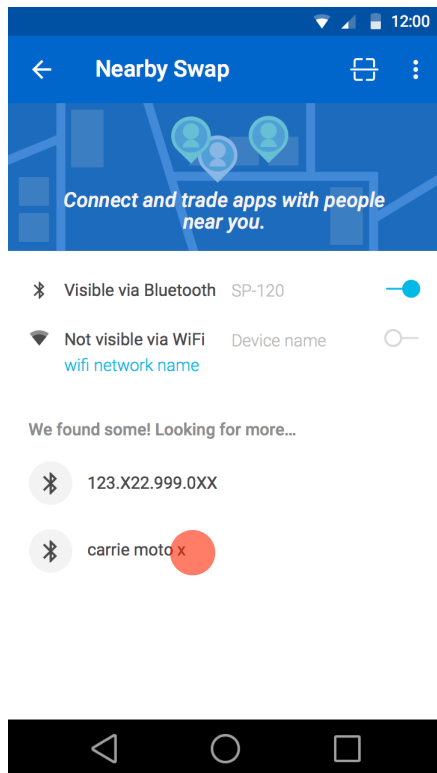
FDroid 1

FDroid 4 User A or User B scans the other person's QR code. Regardless of who scans, both users see the Choose Apps screen next.

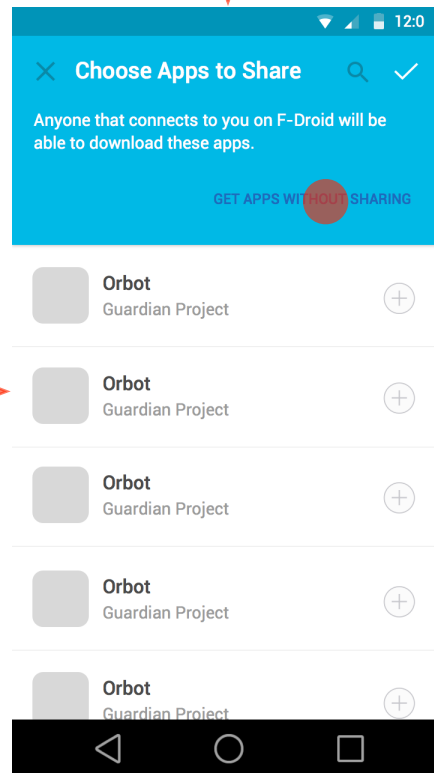
FDroid 3.2 User selects apps and taps the check icon when finished.

FDroid 5 After installing apps, user taps the check icon to return to the Nearby home screen.

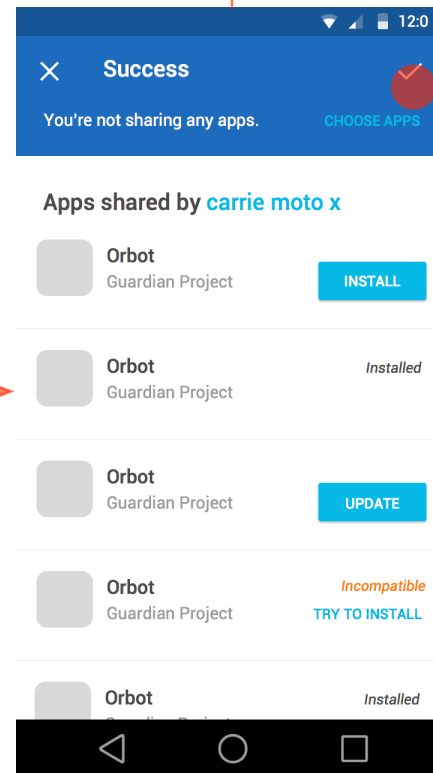
## 2. User A Chooses to Connect with User B



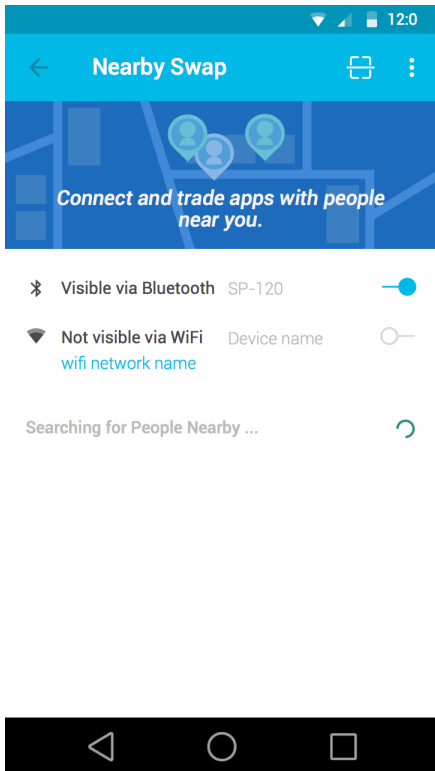
**FDroid 1.3** User A selects User B 'carrie moto x' to share with



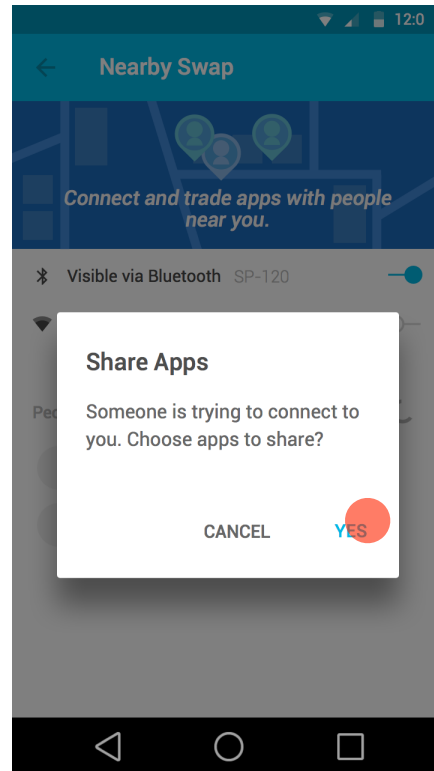
**FDroid 3.2** User A chooses to get apps without sharing. Note: Tapping on the check without selecting apps, would result in the same result.



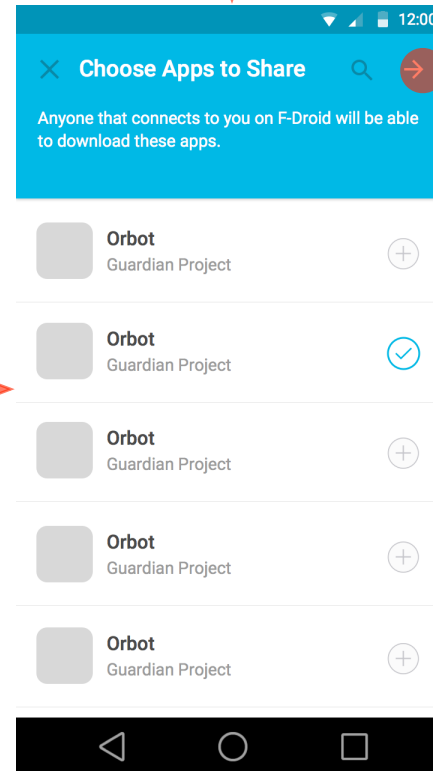
**FDroid 5.1** If User A decides to share apps with User B, he can tap CHOOSE APPS to be taken to the previous screen.



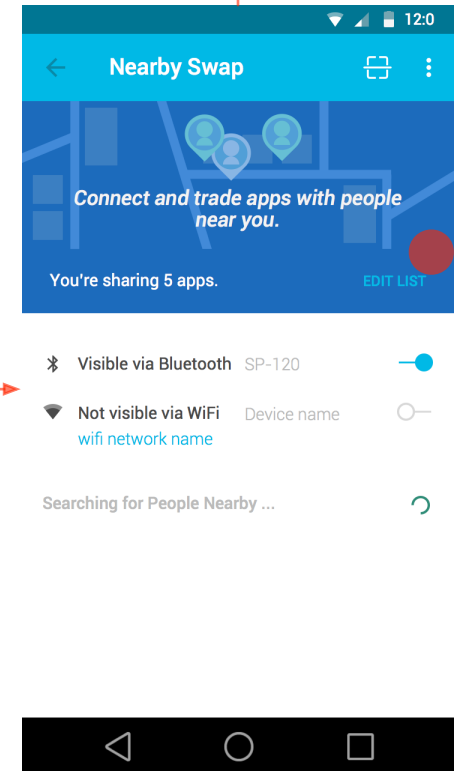
**FDroid 1** User B has not selected anyone to connect with but User B has selected to connect with him because he is visible.



**FDroid 1.1**



**FDroid 3.1**



**FDroid 1.2** If the user taps EDIT LIST, he will get the Choose Apps to Share screen.