

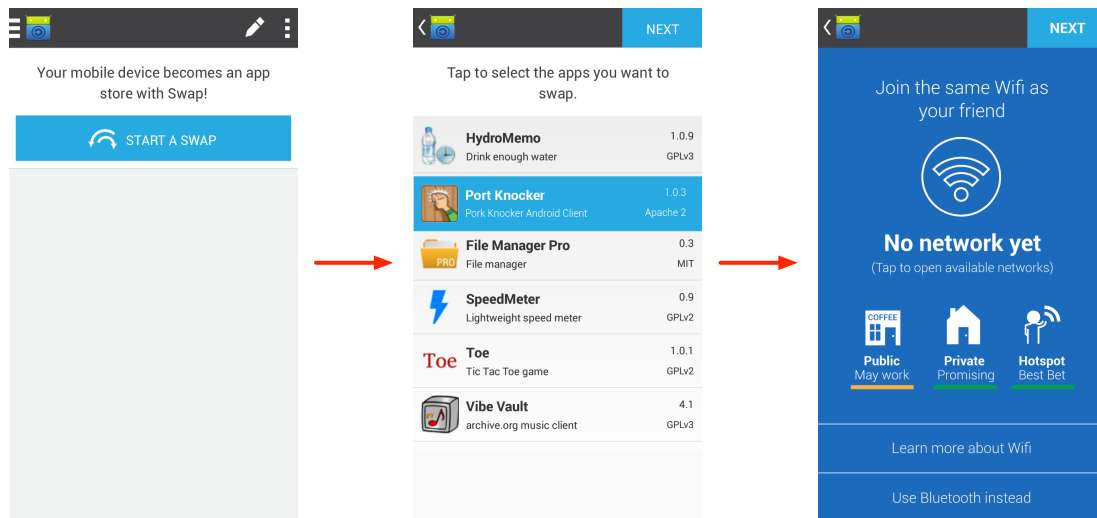
# Main Swap Workflow

These screens are the same for the swapEE and swapER; The intended use is for both people to start a 'new swap' and be in this workflow; However, if only 1 person is, the swap will still work. See R1 for how to notify the swapEE that someone is trying to swap when they are outside of the process.



# First Use Cases

User downloads Fdroid and uses Swap for the first time

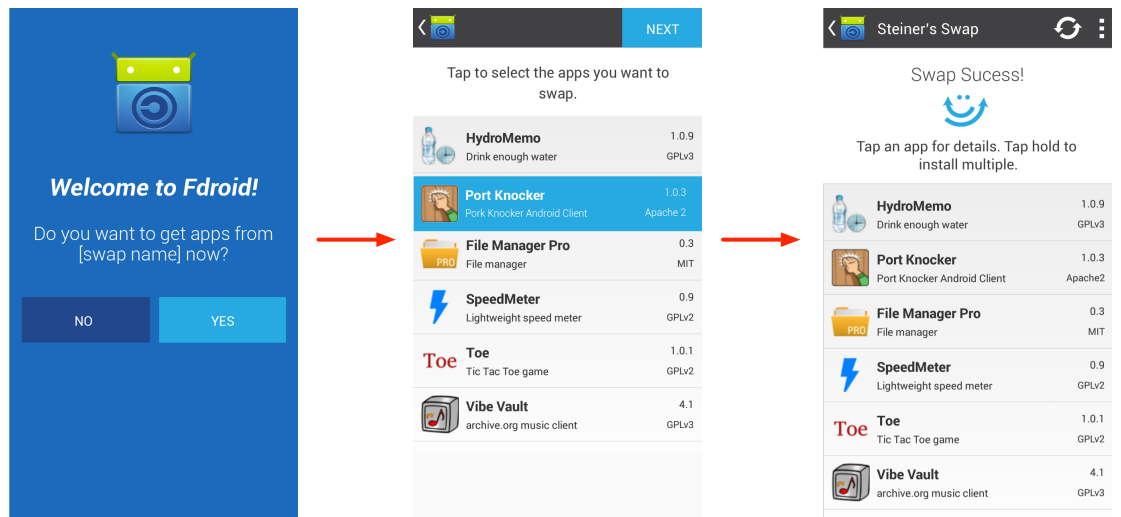


**S0.1**  
Blank swap

**S0.2**  
Create swap

**S1**  
Swap process, step 1

User bootstraps Fdroid from a friend

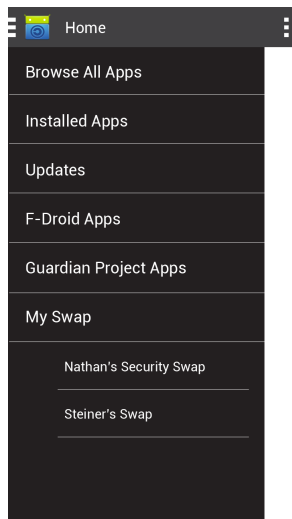


**R0.1**  
Bootstrap intro

**R0.2**  
Create swap

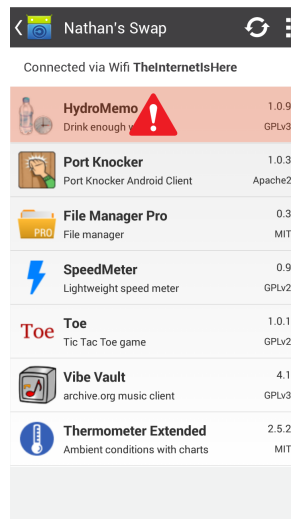
**S3**  
Swap using Bluetooth  
since the connection has  
already been made

# Menu



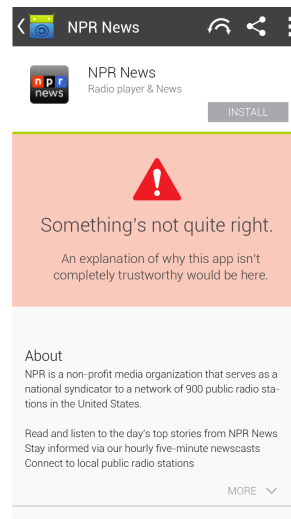
## M1

Existing swaps are listed in a sub-menu under 'My Swap'



## W1

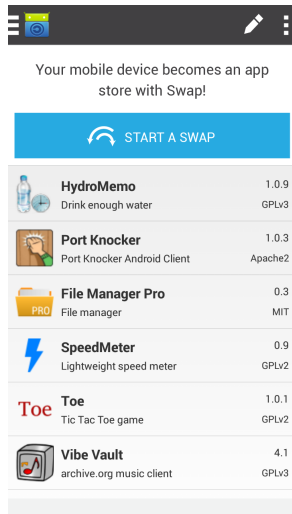
This screen shows two things: 1) the view of an existing swap  
2) how to display an app warning in the list view



## W2

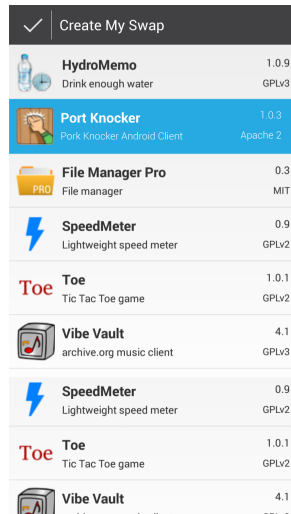
Display for a warning in the app view

# Swap Home



## S0.3

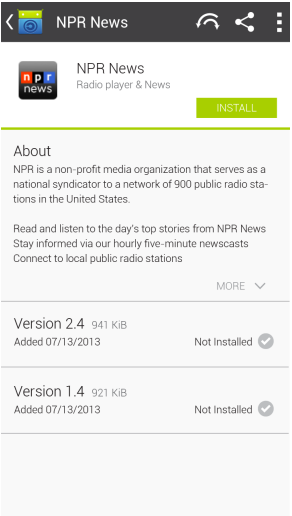
The swap home screen lists the apps that are within your swap



## S0.4

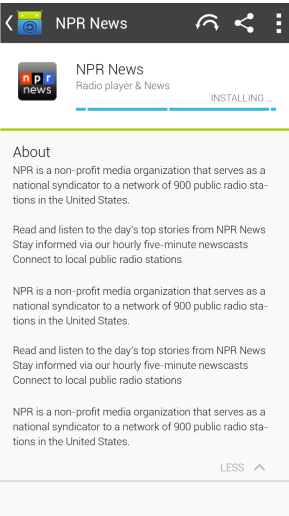
UI for changing the apps in your swap; the apps in your swap are selected in blue

# App Details



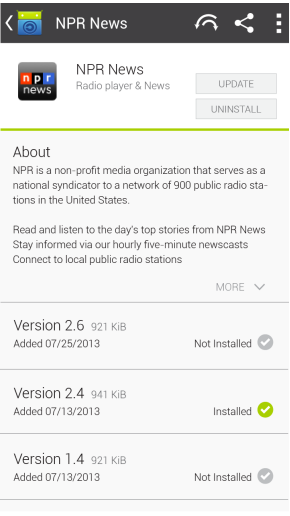
**A1**

App not installed



**A2**

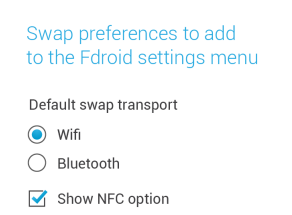
App in the process of installing



**A3**

App intalled

# Preferences



**P1**

Swap preferences to be available within F-droid settings